

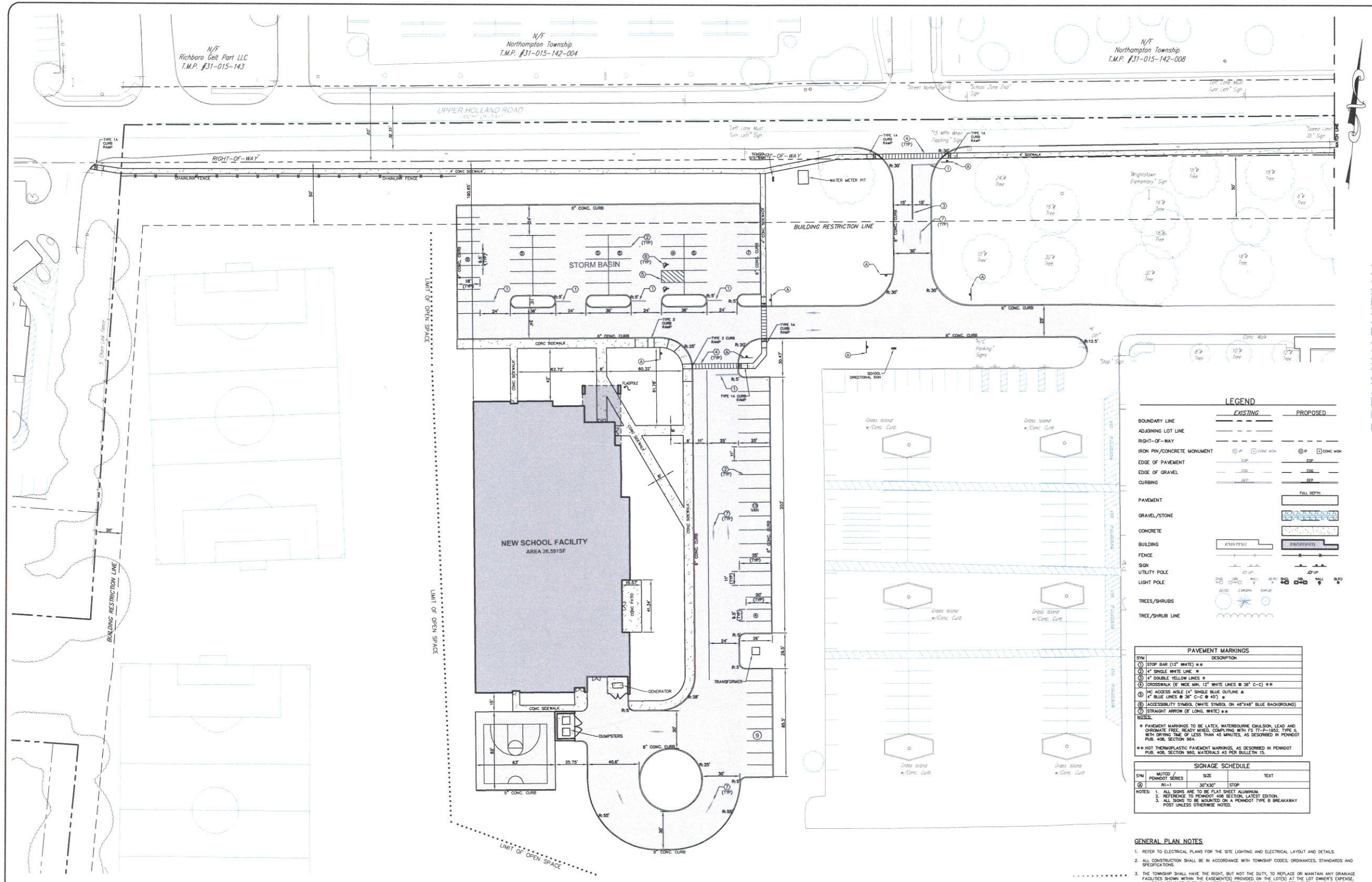


Table with columns for revision number, description, and date.

A.C.H.I.E.V.E. - SLOAN - TWILIGHT PROGRAMS FOR THE COUNCIL ROCK SCHOOL DISTRICT NORTHAMPTON TOWNSHIP, BUCKS COUNTY, PENNSYLVANIA

LAND DEVELOPMENT PLAN

C201

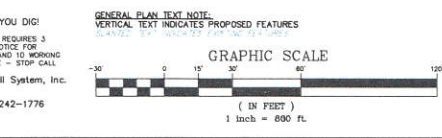


LEGEND table with columns for EXISTING and PROPOSED symbols for boundary lines, pavement, curbing, etc.

PAVEMENT MARKINGS table with columns for SYM, DESCRIPTION, and notes on materials and standards.

SIGNAGE SCHEDULE table with columns for SYM, MOUNTING / PENDANT SERIES, SIZE, and TEXT.

- GENERAL PLAN NOTES: 1. REFER TO ELECTRICAL PLANS FOR THE SITE LIGHTING AND ELECTRICAL LAYOUT AND DETAILS. 2. ALL CONSTRUCTION SHALL BE IN ACCORDANCE WITH TOWNSHIP CODES, ORDINANCES, STANDARDS AND SPECIFICATIONS.



ZONING DATA table comparing EXIST. ZONING and PROP. ZONING requirements for lot area, setbacks, height, etc.

SITE DATA: OWNER/DEVELOPER: COUNCIL ROCK SCHOOL DISTRICT, 30 N. CHANCELLOR ST. RESTON, VA 19145. SITE ADDRESS: 26 UPPER HOLLAND RD. ROXBORO, PA 18954.

PARKING REQUIREMENTS table showing calculations for total parking provided based on facility members, faculty, and staff.

NOTE: PURSUANT TO THE REQUIREMENTS OF ACT 287 OF 1974 AND AS LAST AMENDED BY ACT 181 OF 2008 THE LOCATIONS OF ALL EXISTING UTILITIES SHOWN ON THESE PLANS HAVE BEEN DETERMINED FROM EXISTING UTILITY RECORDS AND/OR ABOVE-GROUND EXAMINATIONS OF THE SITE.

CALL BEFORE YOU DIG! PENNSYLVANIA LAW REQUIRES 3 WORKING DAYS NOTICE FOR CONSTRUCTION AND 10 WORKING DAYS IN DESIGN STAGE - STOP CALL BEFORE YOU DIG! Pennsylvania One Call System, Inc. 1-800-242-1776

PROJECT NUMBER: 457 FACILITY: LAND DEVELOPMENT